

Briefing ESSL

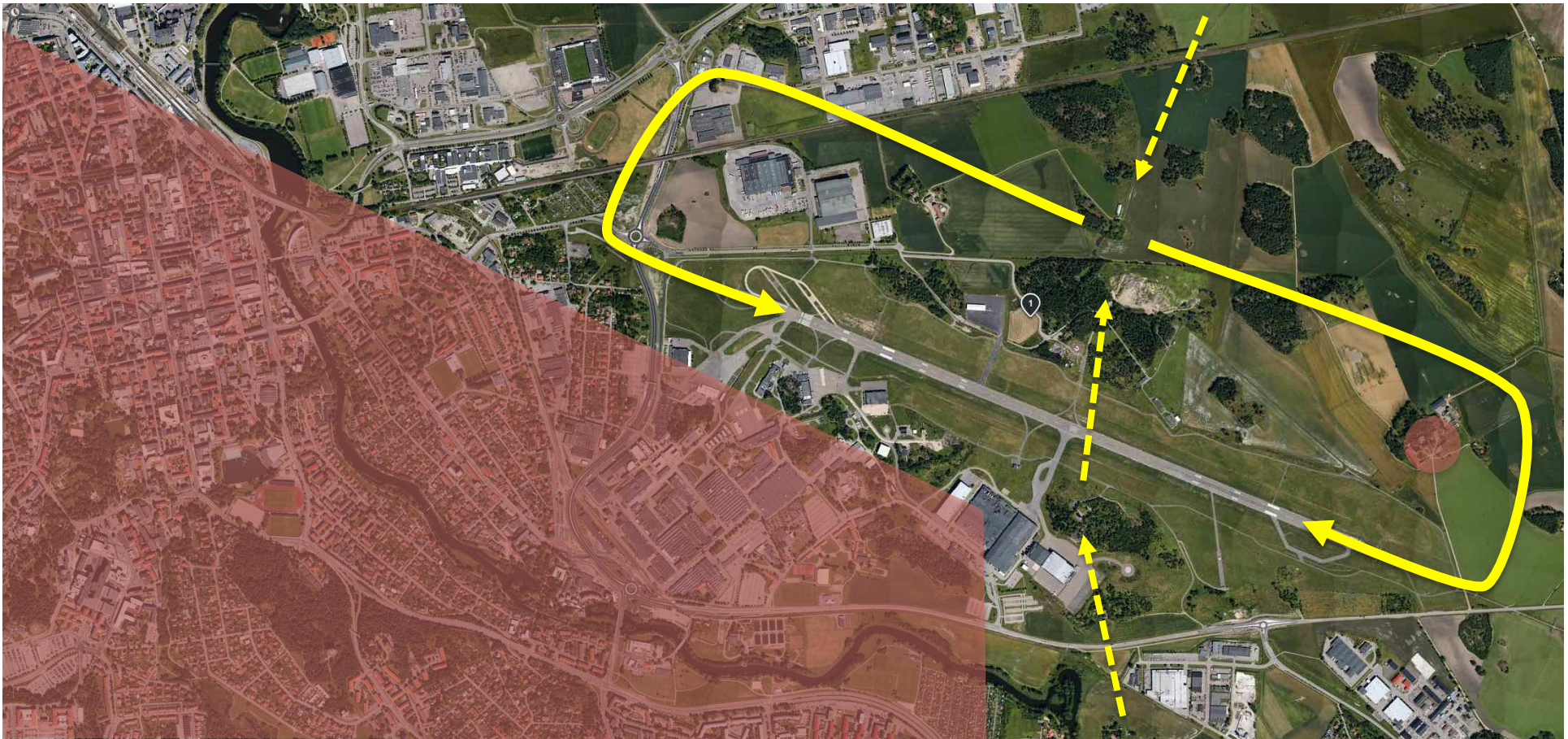


Arrival RWY 11-29, TWR Closed

Avoid flying overhead city of Linköping

Fly and turn north of the RWY

Aim for the TWR and join traffic pattern

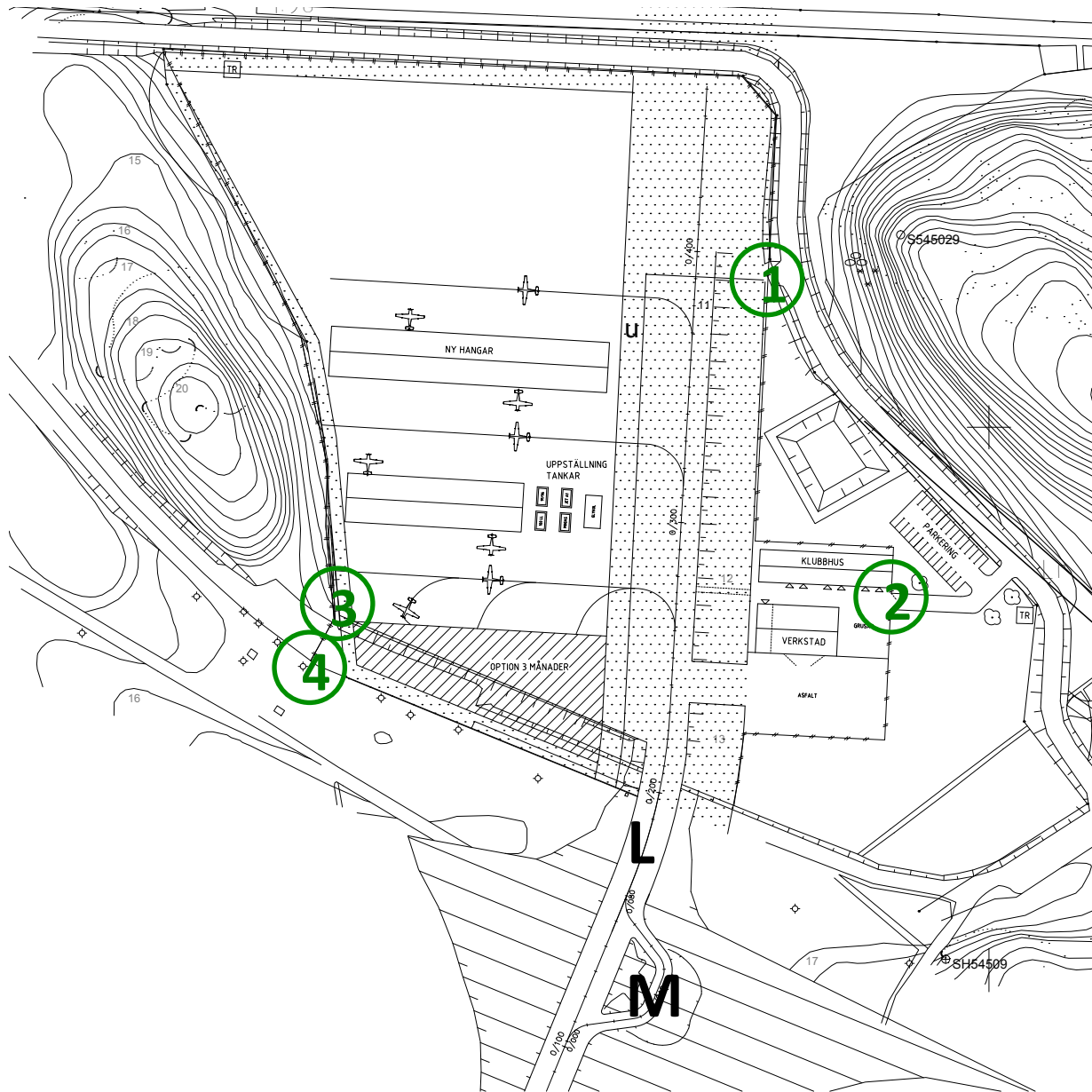




**Refueling 91/96 or 100LL available
after PPR to info@lfk only.**



**Perform run-up in the run-up area or in parking position.
Contact TWR or blind transmit before entering taxiway L**

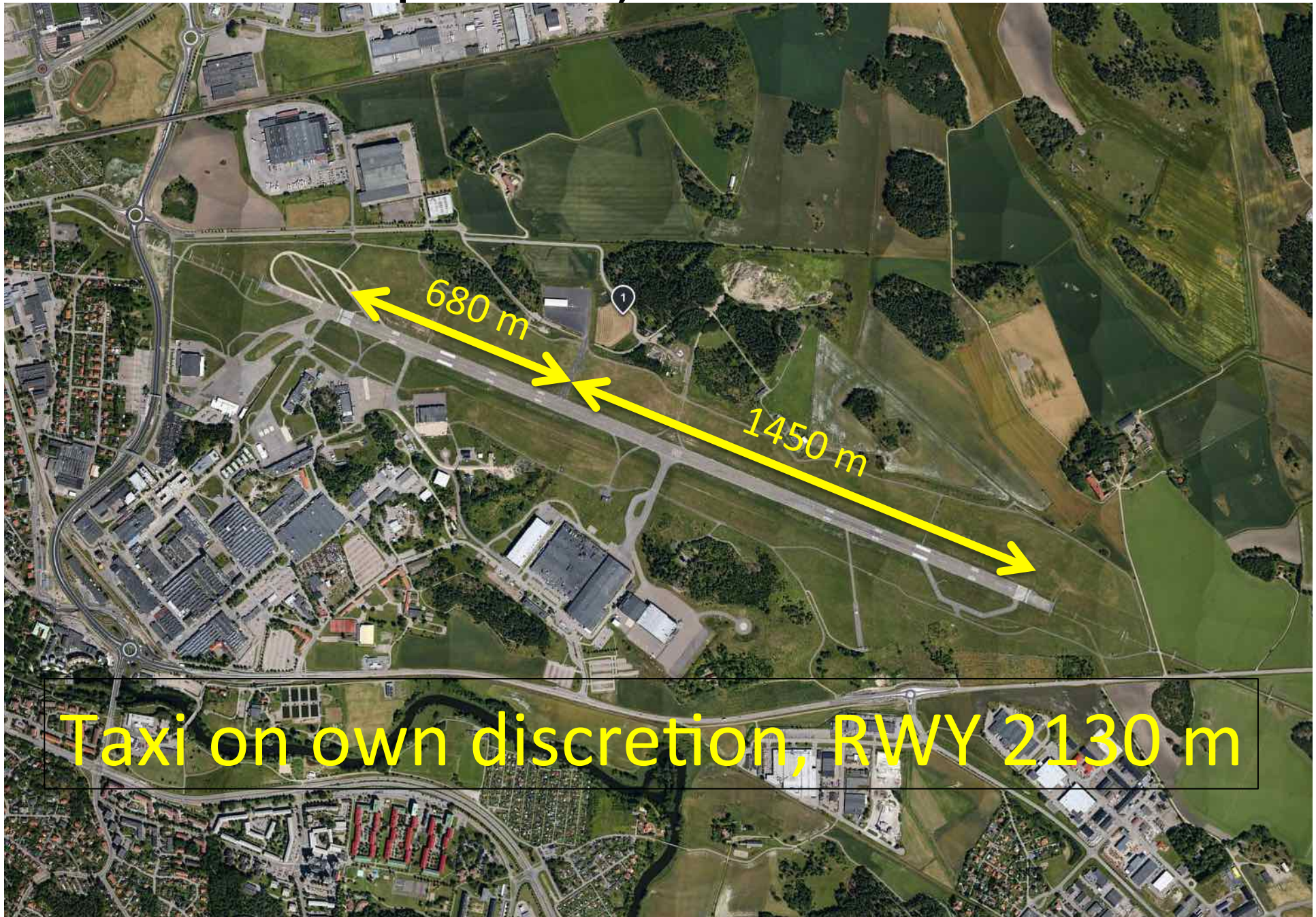


**Access to the
apron**

**Only with key
via gates 1-4**

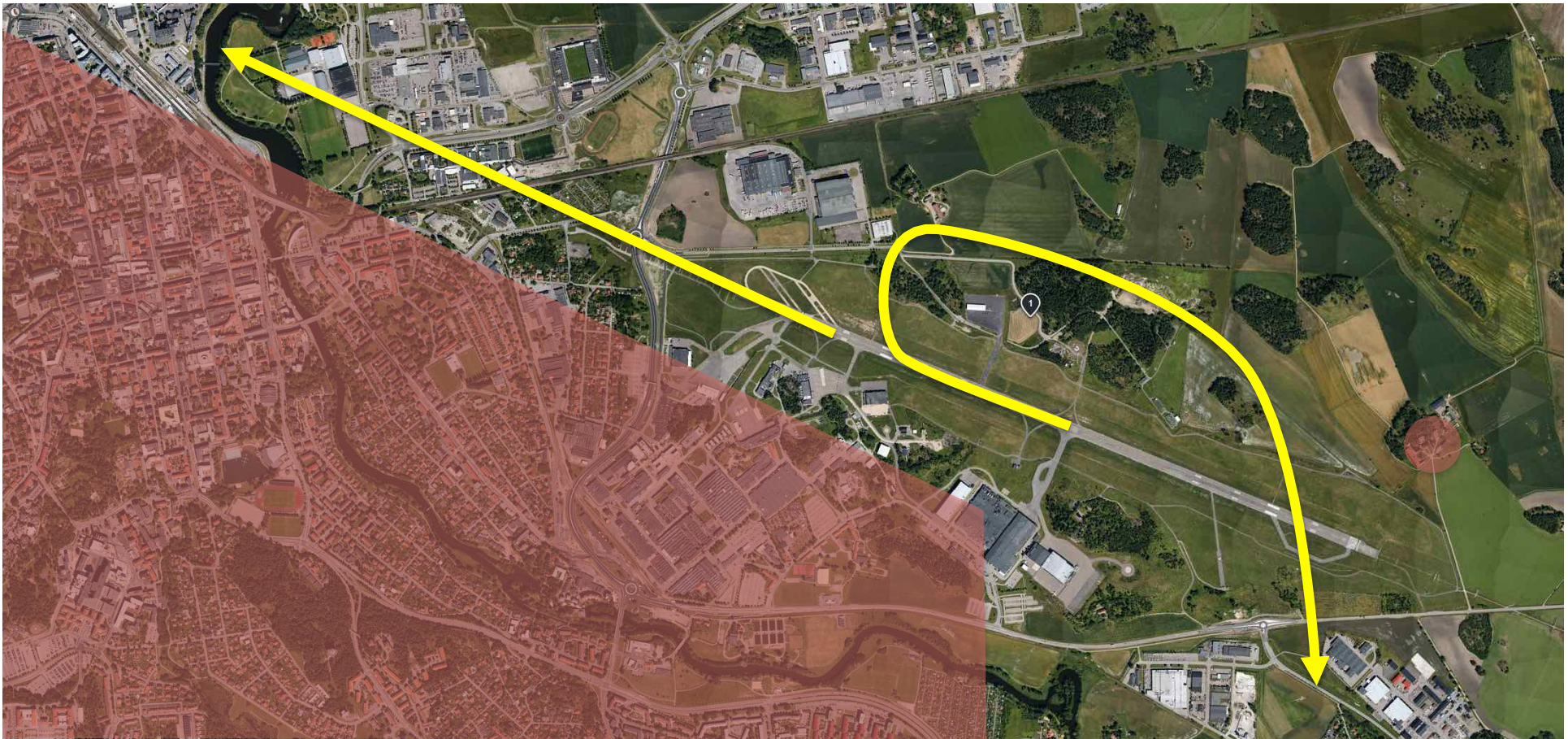
**Make sure you
have made
arrangements
to be let in and
out via the
gates.**

Departure, TWR Closed



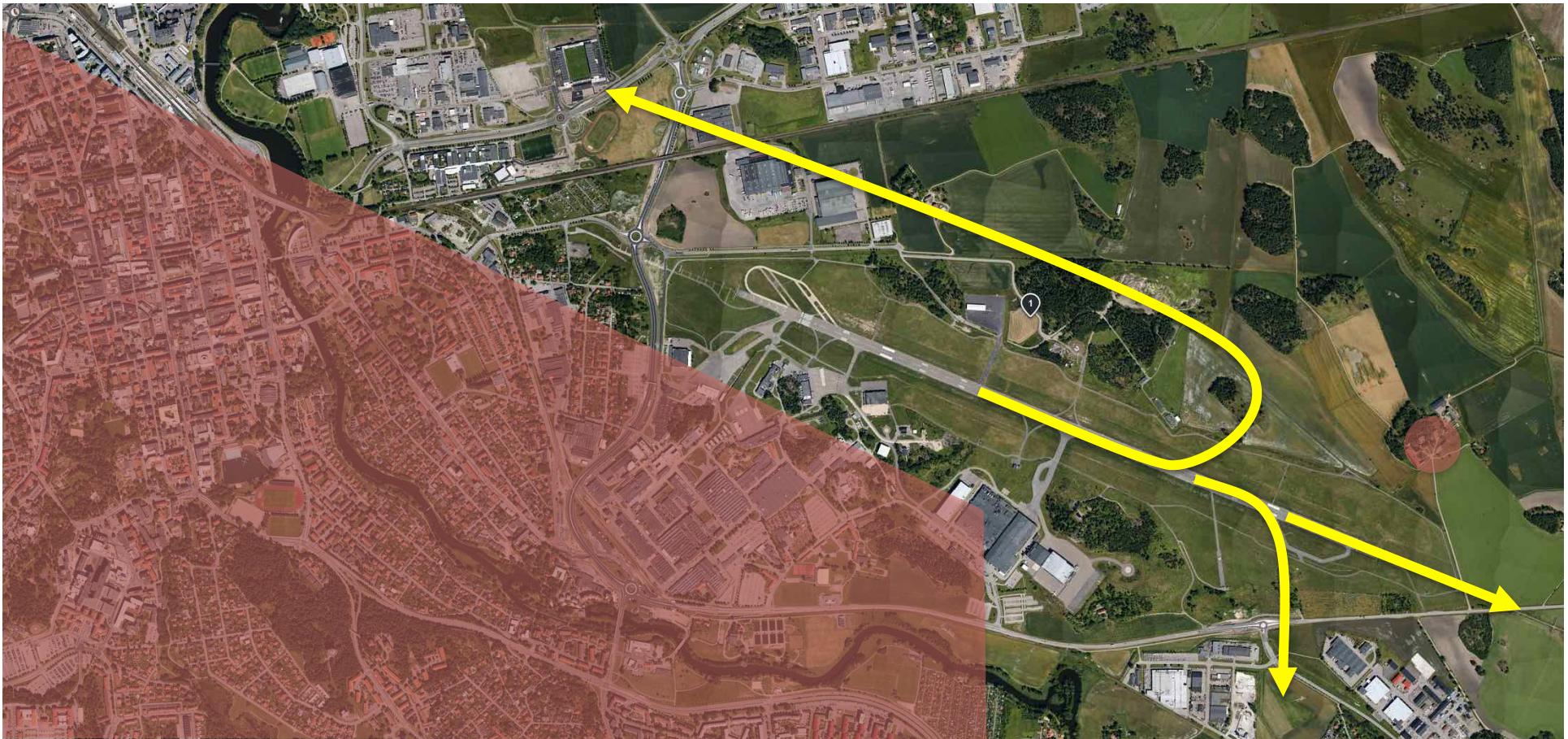
Departure RWY 29, TWR Closed

Avoid flying overhead city of Linköping
Fly and turn north of the RWY

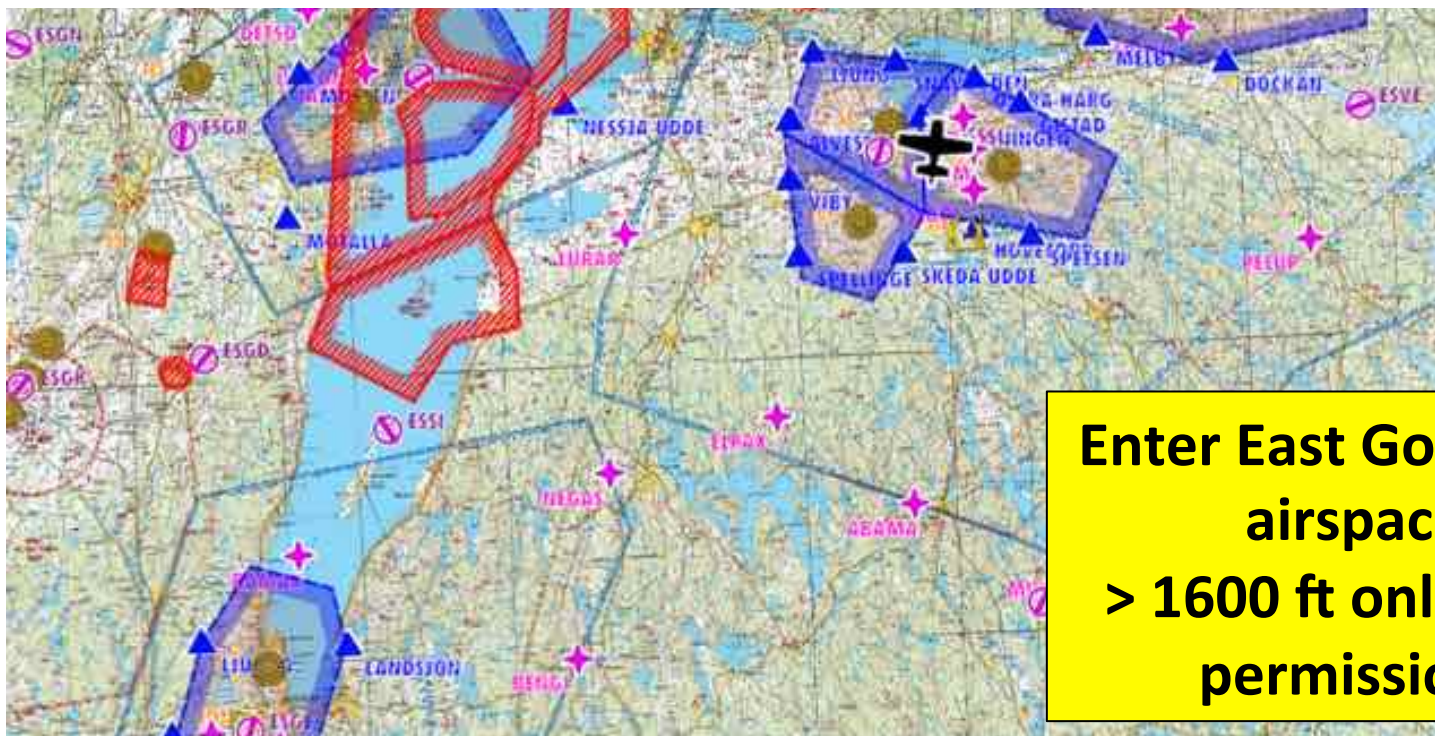


Departure RWY 11, TWR Closed

Avoid flying overhead city of Linköping
Fly and turn north of the RWY



Departure from ESSL when TWR Closed



- 1 – Blind transmit on "SAAB radio" 118.8
- 2 – Before climbing to 1600 MSL contact East Gota CTRL 135,85
- 3 – Activate flight plan in the air with CTRL



Have a safe journey!
Welcome back!