

Visiting Linköpings flygklubb, at Saab airport (ESSL)

General information

- PPR at all times. Apply via <https://ppr.lfk.se/>
- For charts, local traffic regulations and noise abatement procedures, see AIP Sweden on <https://aro.lfv.se/>
- SAAB (south of the runway) is a protected area. Photography depicting SAAB is prohibited.
- Saab TWR frequency is 118.805. Station name “Saab RADIO” is used when TWR is closed.
- TWR hours of service are published in NOTAM. TWR may be open outside published hours.

Arrival when TWR is closed

- Blind transmit your intentions.
- Enter Saab CTR via its entry/exit points.
- Fly and turn north of the RWY, aim for the TWR and join traffic pattern at 1000 MSL. See illustration on page 2.
- Taxi to General Aviation Center (GAC) via TWY Lima.
- Park at GAC. See page 3 for GAC layout.

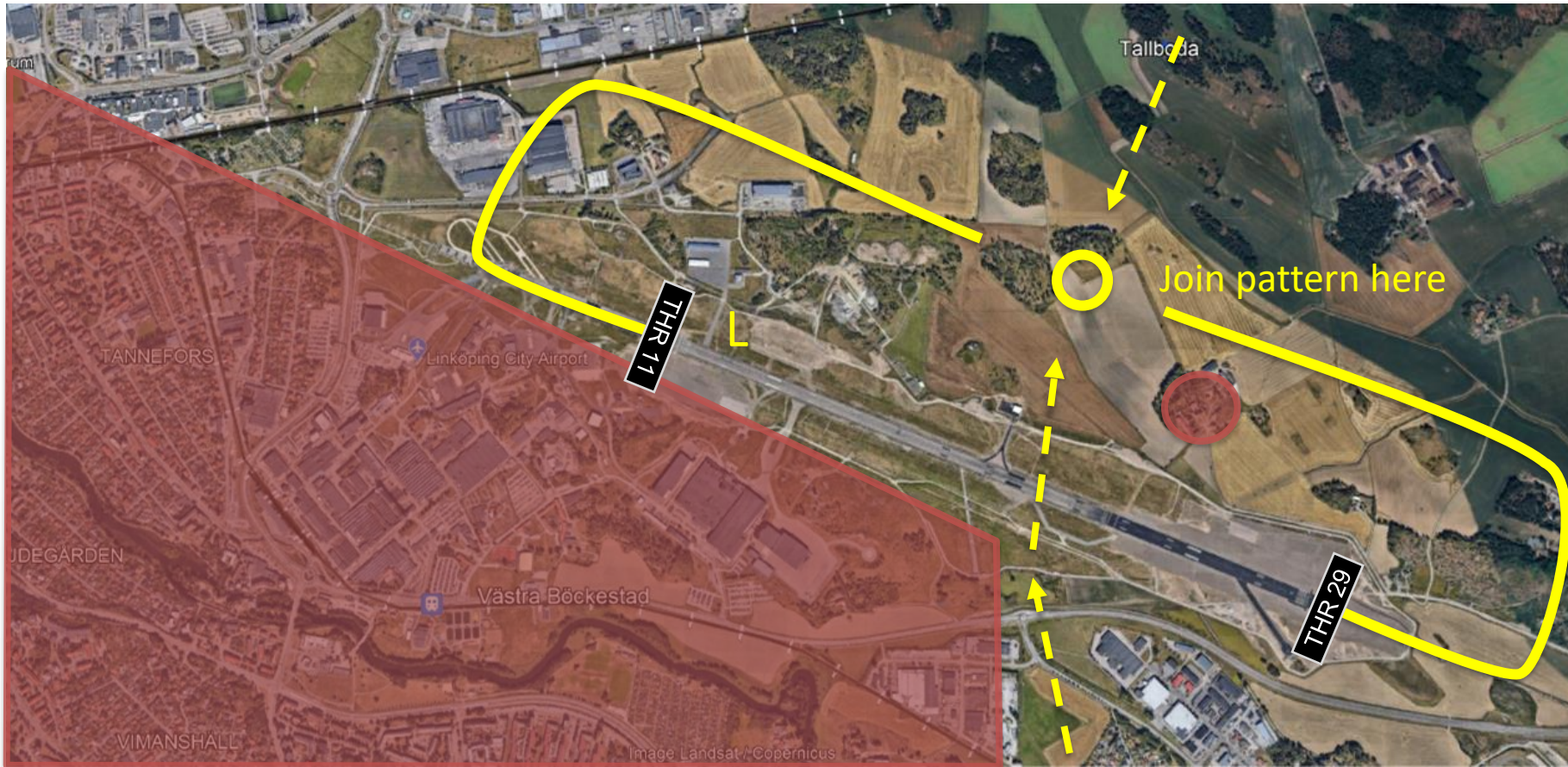
Departure when TWR is closed

- TWR is closed when the RGL lights (on TWY Lima) are turned off.
- Contact Saab airport services on +46 (0)13 18 15 00, to confirm there is no activity on or near the runway area.
- Perform run-up on the run-up area. See page 3 for GAC layout.
- Blind transmit before entering TWY Lima.
- For departure procedures, see illustrations on page 4 and 5.
- Exit Saab CTR via its entry/exit points.
- Contact Östgöta APP on 135.850 before climbing to 1600 MSL.

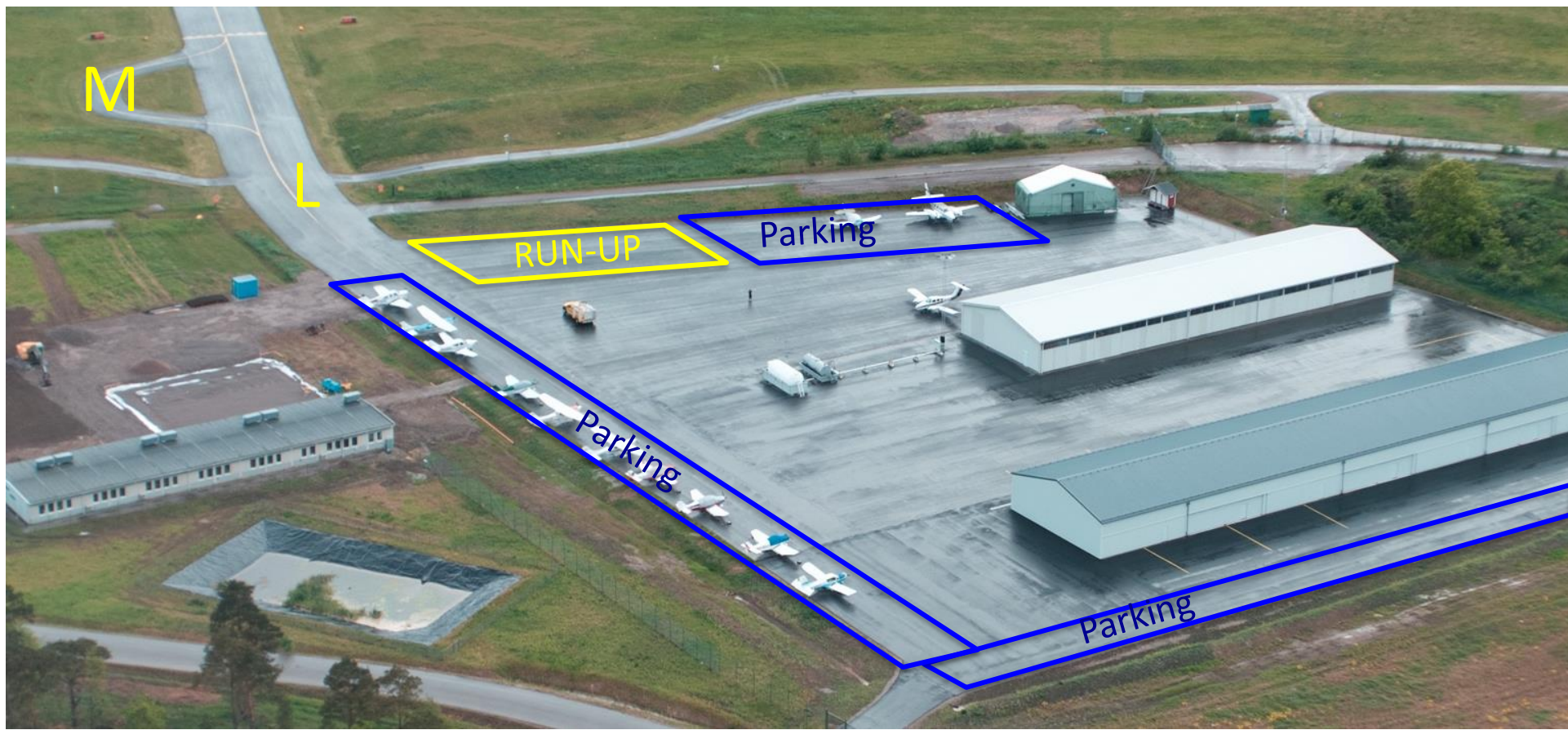
Additional details

- When TWR is open upon departure, contact TWR after start-up.
- On the ground, Östgöta APP is available on 133.105. Include the frequency on the initial call.
- Avoid Malmen CTR and Saab CTR sector B, west Linköping C, unless Malmen TWR is confirmed closed.
- Runway is unlit when Saab TWR is closed. Night flight is not possible outside TWR hours of service.

Arrival procedure, when TWR is closed



General Aviation Center (GAC) layout



Departure procedure RWY 11, when TWR is closed



Departure procedure RWY 29, when TWR is closed

